



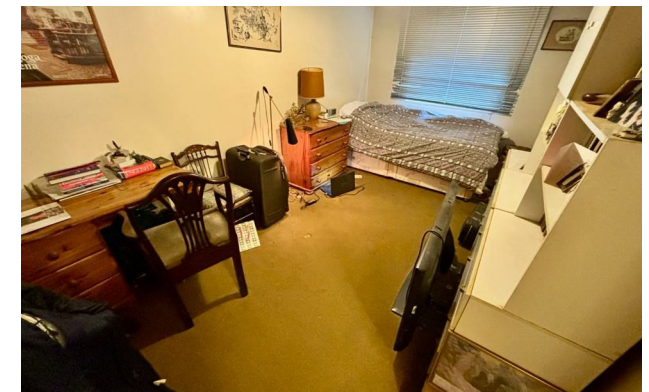
*Jordan fishwick*

**WEST DIDSBURY**  
Palatine Road



## Palatine Road, West Didsbury, M20 2QH

Offers Over £225,000



### The Property

A SPACIOUS ground floor TWO DOUBLE BEDROOM apartment requiring an element of cosmetic updating throughout, with the benefit of a GARAGE and forming part of a purpose built development which is IDEALLY SITUATED with easy access to Didsbury, West Didsbury and the METROLINK. 776 sq ft. The accommodation comprises: Communal entrance hall leading to a generous private entrance hall with built-in storage cupboard off, spacious living room with kitchen leading off, two double bedrooms with fitted wardrobes and the bathroom. In addition, there are double glazed windows and gas central heating installed. Externally, there are well tended communal gardens and residents parking. \*\*No onward chain\*\*

### Directions

M20 2QH



- Ground floor apartment
- 776 sq ft of living space
- Two double bedrooms
- Excellent location close to Metrolink
- Spacious living room
- Generous entrance hall
- Kitchen & bathroom
- Garage

Postcode - M20 2QH

EPC Rating - D

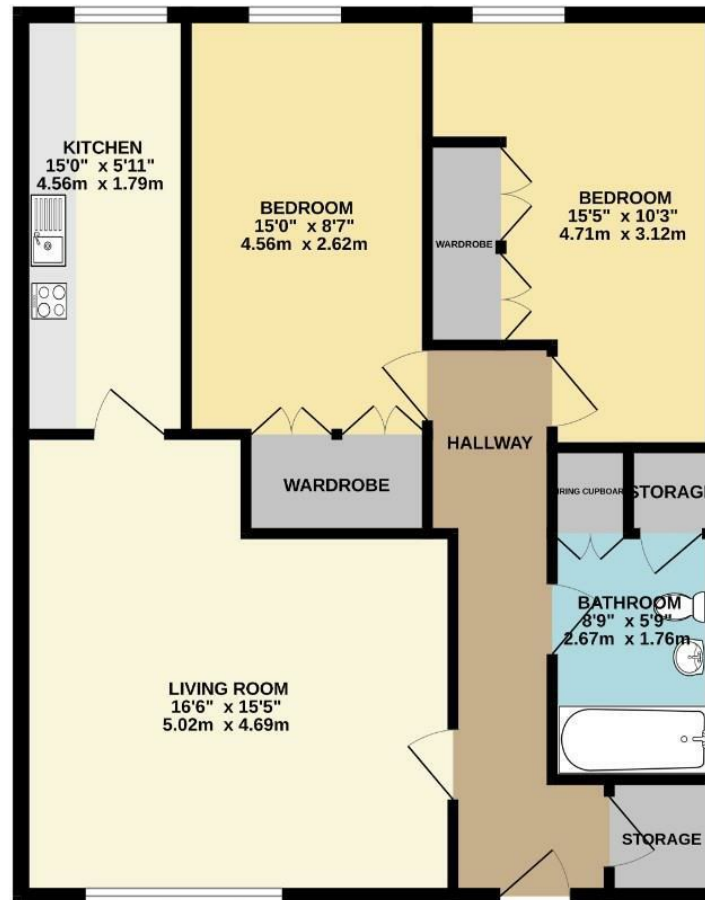
Floor Area - 776.00 sq ft

Local Authority - Manchester City Council

Council Tax - C



GROUND FLOOR  
776 sq.ft. (72.1 sq.m.) approx.



TOTAL FLOOR AREA : 776 sq.ft. (72.1 sq.m.) approx.  
Measurements are approximate. Not to scale. Illustrative purposes only.  
Made with Metropix ©2024



These particulars are believed to be accurate but they are not guaranteed and do not form a contract. Neither Jordan Fishwick nor the vendor or lessor accept any responsibility in respect of these particulars, which are not intended to be statements or representations of fact and any intending purchaser or lessee must satisfy himself by inspection or otherwise as to the correctness of each of the statements contained in these particulars. Any floorplans on this brochure are for illustrative purposes only and are not necessarily to scale.

Offices also at: Wilmslow, Macclesfield, Hale, Sale, Chorlton, Glossop, Manchester & Salford

757-759 Wilmslow Road, Didsbury Village, Manchester

0161 445 4480

didsbury@jordanfishwick.co.uk  
www.jordanfishwick.co.uk